

# Need 2 Know #29

|                                   |  |
|-----------------------------------|--|
| Locks & Codes                     | Page 2 – back of entry door, below Welcome |
| Front Hall Entrance               | Page 3 – back of entry door, below Welcome |
| Kitchen                           | Page 4 – Fridge, below Welcome             |
| Patio                             | Page 5 – inside main patio door            |
| Living Room                       | Page 6 – slide under glass right of TV     |
| Bathroom on Main Floor            | Page 7 – back of door                      |
| Bathroom on 2 <sup>nd</sup> Floor | Page 8 – back of main door                 |
| Master King Bedroom               | Page 9 – back of door                      |
| Master Queen Bedroom              | Page 10 – back of door                     |
| Third Bedroom                     | Page 11 – back of door                     |

## Notes

A/C Unit - The A/C unit will automatically turn off if any patio door is left open for more than 5 minutes. To turn the system back on, close the doors and set A/C to cool.

Noise – We have many residents & guests, please keep noise level down at all times.

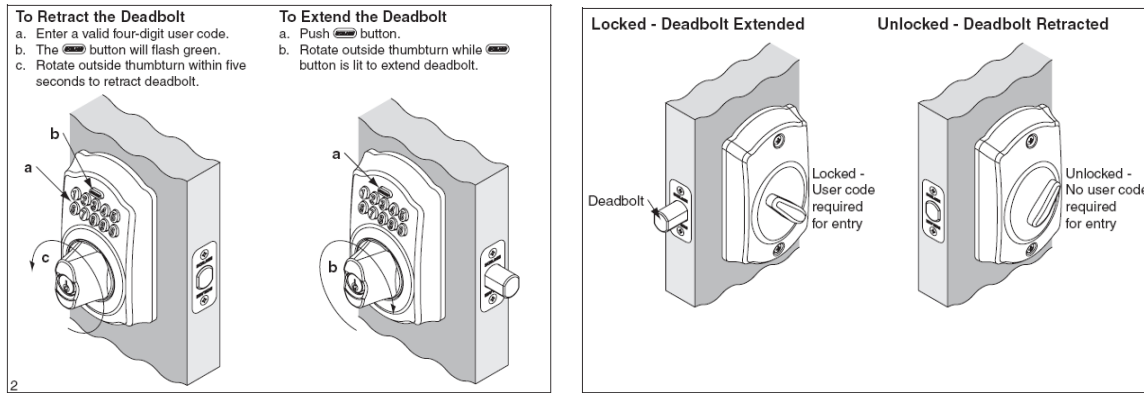
Parking – Only park in your spot identified by the condo number. Unmarked spaces are available on a first come first served basis.

Beach Area – Return all lounge chairs to their storage area under the stairs. Do not take chairs into the water as this promotes premature rusting.

Garbage – Garbage from the unit needs to be removed and placed in the dumpster at the front of the complex, just south of the entrance from the road.

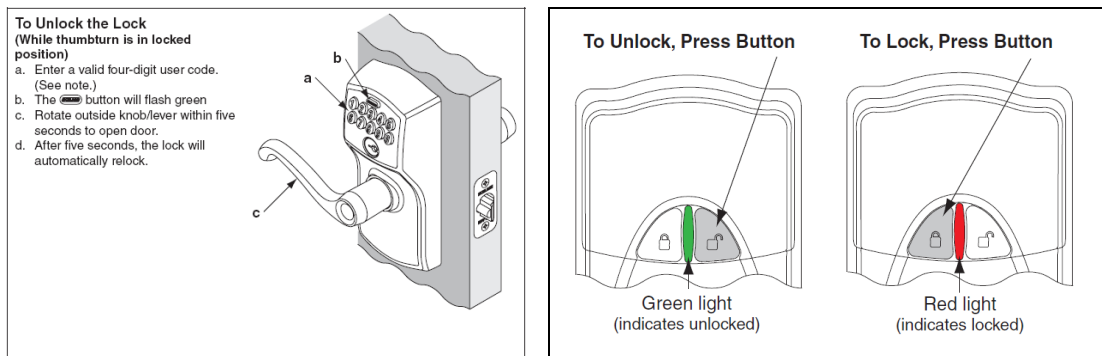
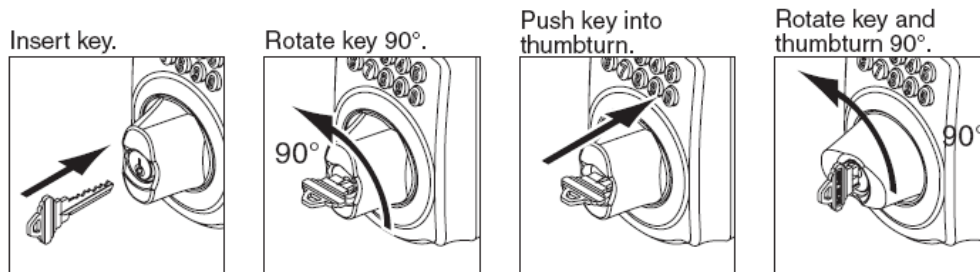
**Need 2 Know – Locks & Codes (all access codes will be given upon request)**

- One key operates both locks on the front door. Note: you must unlock the top deadbolt first and then the bottom lock.



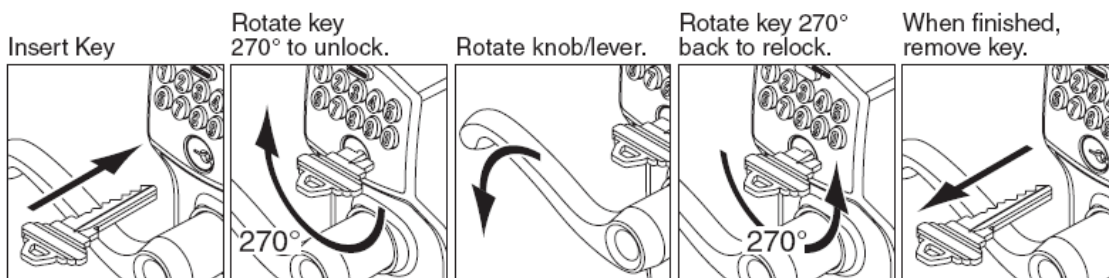
**Key Override**

NOTE: Key will both extend and retract deadbolt.



**Key Override**

NOTE: Key does not retract latch.



Key cannot be removed in this position.

## Need 2 Know – Front Hall Entrance

- To silence smoke & carbon monoxide detectors, push center button
- HVAC system is a single unit with two controls. This unit can be operated from the main floor at the touch panel or from the thermostat at the top of the stairs. The thermostat at the top of the stairs will toggle the display from the current indoor temperature, to the outdoor temperature. If the Hold key is pressed on the thermostat upstairs it will lock out control from the main floor touch panel. Temperature can be controlled on the main floor touch panel by pressing the Temp icon on the screen.  
Note: On touch screen you can always go back to the main menu by pressing the “Home” icon in the bottom right hand corner that looks like a door.
- **To Arm Security System:** On touch screen just outside of main floor bathroom, press the security icon (looks like a lock), this takes you to the security screen. Press the Away button on the security screen and enter your four digit code. The touch screen will immediately start to beep indicating your 30 second count down to depart the unit and lock the front door. The LED light on the touch screen will turn from green to red indicating that the system is armed.
- **To Disarm Security System:** When re-entering the unit if the alarm has been armed, the touch panel will start to emit a constant tone reminding you to disarm the system. The screen will pop up with the Disarm function. Press the Disarm button and enter your four digit code. The LED light will turn from red to green indicating that you have successfully disarmed the system. You have 30 seconds to disarm the system upon entering the unit. Note: On touch screen you can always go back to the main menu by pressing the “Home” icon in the bottom right hand corner that looks like a door
- Security safe can be accessed by entering the access code followed by the ‘B’, turn dial and now pull open. To lock, close door and turn dial.
- Tennis court lights are located on the pole to the North outside of the court.

### Inventory

Vacuum

Tennis Rackets x 4

Sun Umbrella x 1

Beach Toys in bin under stairs

## Need 2 Know – Kitchen

- Use Cerama Bryte, a dry paper towel and rub hard for stove top
- All cleaning supplies located under sink

### Inventory

Black & Decker Cordless Electric Kettle  
KitchenAid 4KSB5SS0 5 Speed Professional Blender  
Black & Decker 4 Slice Toaster  
Black & Decker Coffee Maker  
Frigidaire Electric Range  
Whirlpool Refrigerator  
Whirlpool Dishwasher  
Whirlpool Microwave Hood Combination  
6 Wine Glasses  
Henkel 10 Piece Pot Set  
Henkel Cutlery 8 settings  
Henkel 7 Piece Block Set  
Dinnerware 8 settings  
Glass Table & 5 chairs  
French Press  
Can Opener  
Cork Screw

## Need 2 Know – Patio

- Clothes rack, to use, flip up and engage top piece. Please keep away from balcony edge.
- SECURITY PATIO DOOR LOCKS – Push pin through hole at top and ensure it catches hole on other side.
- Electric BBQ – key to successful cooking is to minimize opening the lid and allowing the heat to escape. Allow preheat for 10 minutes to get temperature up.

Note: A/C will turn off if doors or windows left open for longer than 5 minutes.

### Inventory

BBQ- Infrared Electric Grill  
Loveseat & Two Armchairs plus Table  
Drying Rack

## Need 2 Know – Living Room

- There are two remote controls for the TV system in the living room, one for the Satellite box (silver), and one for the LG TV & Blu-Ray System (black).
- To Watch TV: Turn on the TV with small TV button found bottom left (NOT big RED found top left) on the black remote. With the silver remote, turn on the satellite box. Ensure the AV INPUT is set to SATELLITE using the input button. The volume for the TV is set to the midway point using the volume on the bottom left of the black remote. Adjust the volume and channels using the silver remote.
- To Watch a DISC: On the black remote, press the big red button found top left. Insert DISC.
- To Watch INTERNET APPS: On the black remote, press the big red button found top left and now select HOME on remote.
- To Play Xbox 360: On the black remote, press the AV INPUT and move to GAME. Turn on the Xbox.
- Turning Off System: Press the smaller TV power button.
- Xbox 360 with controllers (qty 2)
- GAMES & Movies are located on the bottom shelf.
- Line 1 is for local calls
- Line 2 is for FREE North American calls
- Grace Internet radio + iPod/iPhone dock is located in front of the TV.
- Whole House Music System: The system has two sources. Source #1 is the radio on top of the dryer. It must be on and tuned to a station. Source #2 is the Grace Internet Radio / Dock. To select the source from a volume keypad, push the knob and advance from 1 through 6, with 1 & 2 as noted above. Turn dial to adjust volume.
- Asus computer is mounted on the back of the LCD. To power on, press large round button found on the right hand side of the rear of the LCD on the PC.

### Inventory

Panasonic 2 Line Phone System  
 LG 50" HDTV  
 LG Blu-Ray Smart Player  
 Movies  
 Love Seat & Sofa  
 Chair & Ottoman  
 Widescreen TV Stand  
 Satellite DVR unit w/Remote  
 Grace Internet Radio GDI-IR3020 - Duet Dock  
 Xbox 360 w/2 controllers  
 Xbox Games  
 Asus Computer  
 LG 22" LCD  
 HP Laser Printer  
 Logitech S100 Speakers  
 KB & Mouse

Need 2 Know – Bathroom on Main Floor

- Electronic Timers for Exhaust Fan & Shower Lights
- Volume for speakers is outside the door.
- Only use high efficiency laundry detergent (ie Tide HE)

Inventory

Whirlpool Front Loading Washer & Stacking Dryer

| <u>Towels</u> | Out | Stored |
|---------------|-----|--------|
| Face          | 2   | 2      |
| Hand          | 1   | 1      |
| Body          | 2   | 2      |
| Mat           | 1   | 1      |
| Beach         |     | 6      |

Need 2 Know – Bathroom on 2<sup>nd</sup> Floor

- Electronic Timers for Exhaust Fan & Shower Lights
- Volume for speakers is to the right of sink.

Inventory

Hair Dryer

| <u>Towels</u> | Out | Stored |
|---------------|-----|--------|
| Face          | 2   | 2      |
| Hand          | 1   | 1      |
| Body          | 2   | 0      |
| Mat           | 1   | 1      |



## Need 2 Know – Master Bedroom King

- All linens for the king bed are located in the closet on the top shelf on the left hand side.
- An extra blanket is stored in the closet on the top shelf on the left hand side. Please store comforter here if using blanket.

### Inventory

Protect-A-Bed pillow and mattress covers  
Complete Set of King Sheets x 2  
Extra Blanket  
Alarm Clock  
Body Towels x 2

## Need 2 Know – Master Bedroom Queen

- All linens for the queen bed are located in the closet on the top shelf on the left hand side.
- A duvet for the master room is stored in the closet on the top shelf on the left hand side. Please store comforter here if using duvet.
- Wall safe is located inside the closet on the right hand side.
- Volume for speakers is to the left of the door.

### Inventory

Protect-A-Bed pillow and mattress covers  
Complete Set of Queen Sheets x 2  
Duvet  
Panasonic Cordless Phone  
Alarm Clock  
Security Safe  
Body Towels x 2

### Need 2 Know – Third Bedroom

- All linens for the queen bed are located in the closet.
- An extra blanket for the guest room is stored in the closet. Please store comforter here if using blanket.
- Aero-Bed w/pump is located in the closet

#### Inventory

Protect-A-Bed pillow and mattress covers  
Complete Set of Queen Sheets x 2  
Extra Blanket  
Alarm Clock  
Queen Aero-Bed w/Pump  
Single Aero-Bed w/Pump  
Iron & Ironing Board  
Fold-N-Go Playpen  
Booster Seat