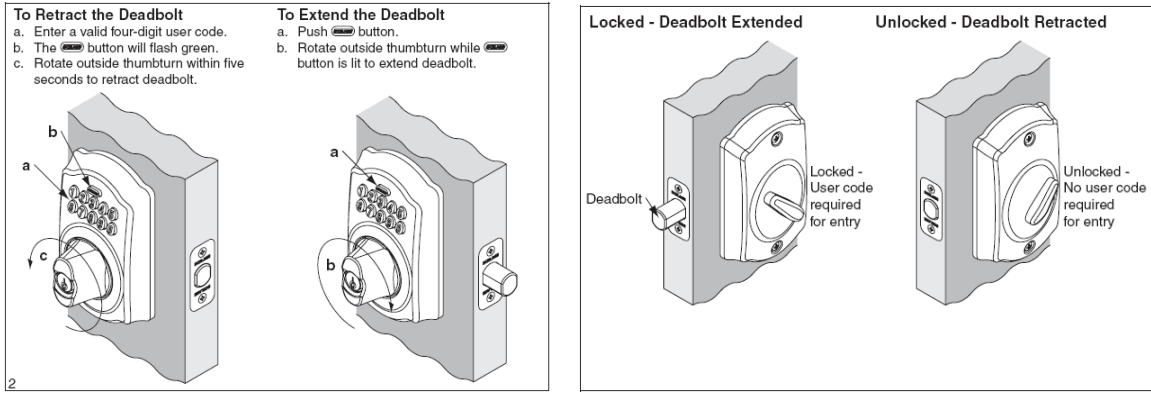


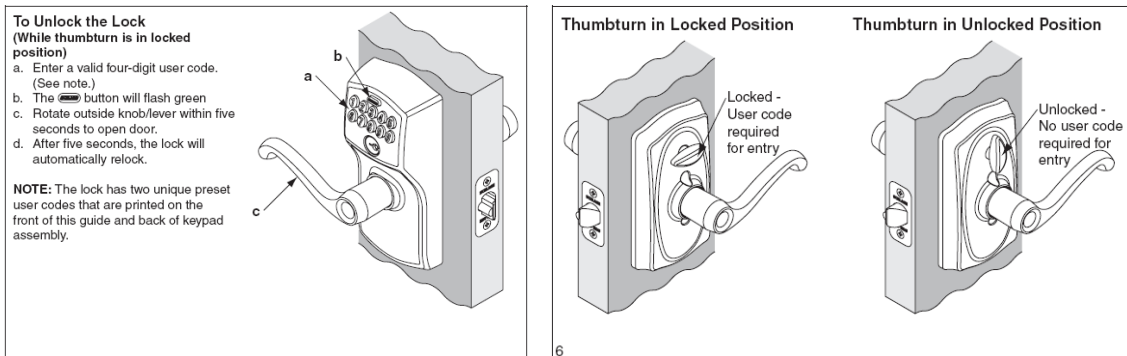
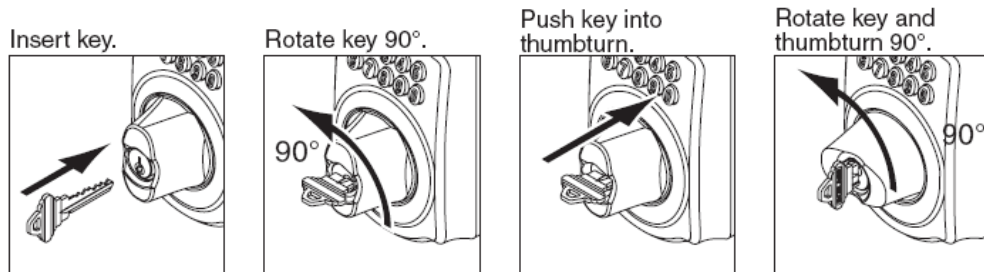
Need 2 Know – Locks & Codes (all access codes will be given upon request)

- One key operates both locks on the front door. Note: you must unlock the top deadbolt first and then the bottom lock.



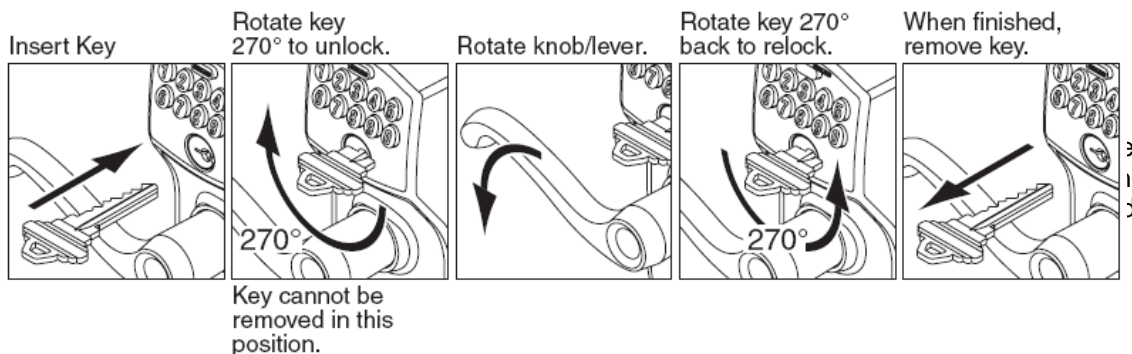
Key Override

NOTE: Key will both extend and retract deadbolt.



Key Override

NOTE: Key does not retract latch.



Need 2 Know – Front Hall Entrance

- Alarm system will be disabled prior to your arrival. If you wish to use the alarm system during your stay, follow the instructions below.
- **To Arm Security System:** Press the Away button on the security screen and enter your four digit code. The keypad will immediately start to beep indicating your 30 second count down to depart the unit and lock the front door. The LED light on the keypad will turn from green to red indicating that the system is armed.
- **To Disarm Security System:** When re-entering the unit if the alarm has been armed, the keypad will start to emit a constant tone reminding you to disarm the system. Press the Off button and enter your four digit code. The LED light will turn from red to green indicating that you have successfully disarmed the system. You have 30 seconds to disarm the system upon entering the unit.
- To enter tennis court, use the key on one of the key sets hanging in the front closet. Lights are located on the pole to the North outside of the court.

Inventory

Vacuum
Washer & Dryer
Iron & Ironing Board
Broom & Dust Pan
Mop & Bucket
Tennis Rackets x 2
Sun Umbrellas x 2

Notes

Noise – We have many residents & guests, please keep noise level down at all times.

Parking – Only park in your spot identified by the condo number. Unmarked spaces are available on a first come first served basis.

Beach Area – Return all lounge chairs to their storage area under the stairs. Do not take chairs into the water as this promotes premature rusting.

Garbage – Garbage from the unit needs to be removed and placed in the dumpster at the front of the complex, just south of the entrance from the road.

Need 2 Know – Kitchen

- Use Cerama Bryte, a dry paper towel and rub hard for stove top
- Water from fridge is filtered via under counter system (not the fridge unit)
- All cleaning supplies located under sink

Inventory

Electric Kettle
Black & Decker Coffee Maker
Blender
2 Slice Toaster
Refrigerator
Frigidare Electric Range
Frigidare Dishwasher
Whirlpool Microwave
Table & 4 chairs
Pot Set
Cutlery
Dinnerware settings
Cutting Board
Can Opener & Cork Screw

Need 2 Know – Patio

- Clothes rack is mounted on the wall. To use, flip up the silver cover and extend the rods by pulling away from the wall. To close, flip up silver cover, and push rods towards wall.
- Electric BBQ – key to successful cooking is to minimize opening the lid and allowing the heat to escape. Allow preheat for 10 minutes to get temperature up
- SILVER SECURITY PATIO DOOR LOCKS – Located bottom left of doors. Turn counter clockwise to open and clockwise to engage.

Note: A/C will turn off if doors left open for longer than 5 minutes.

Inventory

Patio Furnishings (4 chairs & table)
Wall Mounted Drying Rack
Electric BBQ

Need 2 Know – Living Room

- There are two remote controls for the TV/Home theatre system in the living room, both labeled: one for the Weststar Digital Cable box, and one for the Samsung TV and DVD stereo System.
- To Watch TV: Turn on the digital cable box with the cable box remote. A green indicator on the cable box will light showing that it is on. Turn on the TV by pressing power button on the Samsung remote. Ensure that the TV is on the correct input by pressing the TV/Video button and cycle through to the proper input. Channels and electronic program guides can be controlled with the Digital Cable remote. Volume may be controlled by using the primary volume buttons on the Samsung remote
- Also note: The digital cable box remote also has volume commands. This volume has been set to the mid way point and shouldn't be adjusted further. If there doesn't seem to be sound, you may check this volume to ensure it hasn't be turned all the way down.
- To Watch a DVD: On the Samsung remote, press the DVD power button and the TV should switch automatically (HDMI input).

Inventory

Samsung 40" HDTV w/Remote
Samsung DVD Player
Kaon Satellite Receiver w/Remote
Wall Mounted Panasonic Cordless Phone
Microfiber Sectional SofaBed
Grace Internet Radio GDI-IR3020 - Duet Dock

Need 2 Know – Bathroom

<u>Inventory</u>		
Hair Dryer		
<u>Towels</u>	Out	Stored
Face	2	4
Hand	1	3
Body	2	4
Mat	1	1
Beach	0	4

Need 2 Know – Bedroom

- All linens for the queen bed are located in the closet on the right hand side.
- All linens for the sectional sofa bed are located in the closet on the left hand side.

Inventory

Queen Size Pillows x 2
Complete Set Of Queen Sheets x 2
Anti-Allergy Pillow & Mattress Covers
Duvet
Sony Dream Machine ICF-C205 Alarm Clock
Panasonic Fax & Copier KX-FPG391
HP Laser P1102W Printer
Panasonic Cordless Phone
Pillows for SofaBed x 2
Sheets for Sofa Bed x 1
Blanket x 1